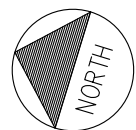
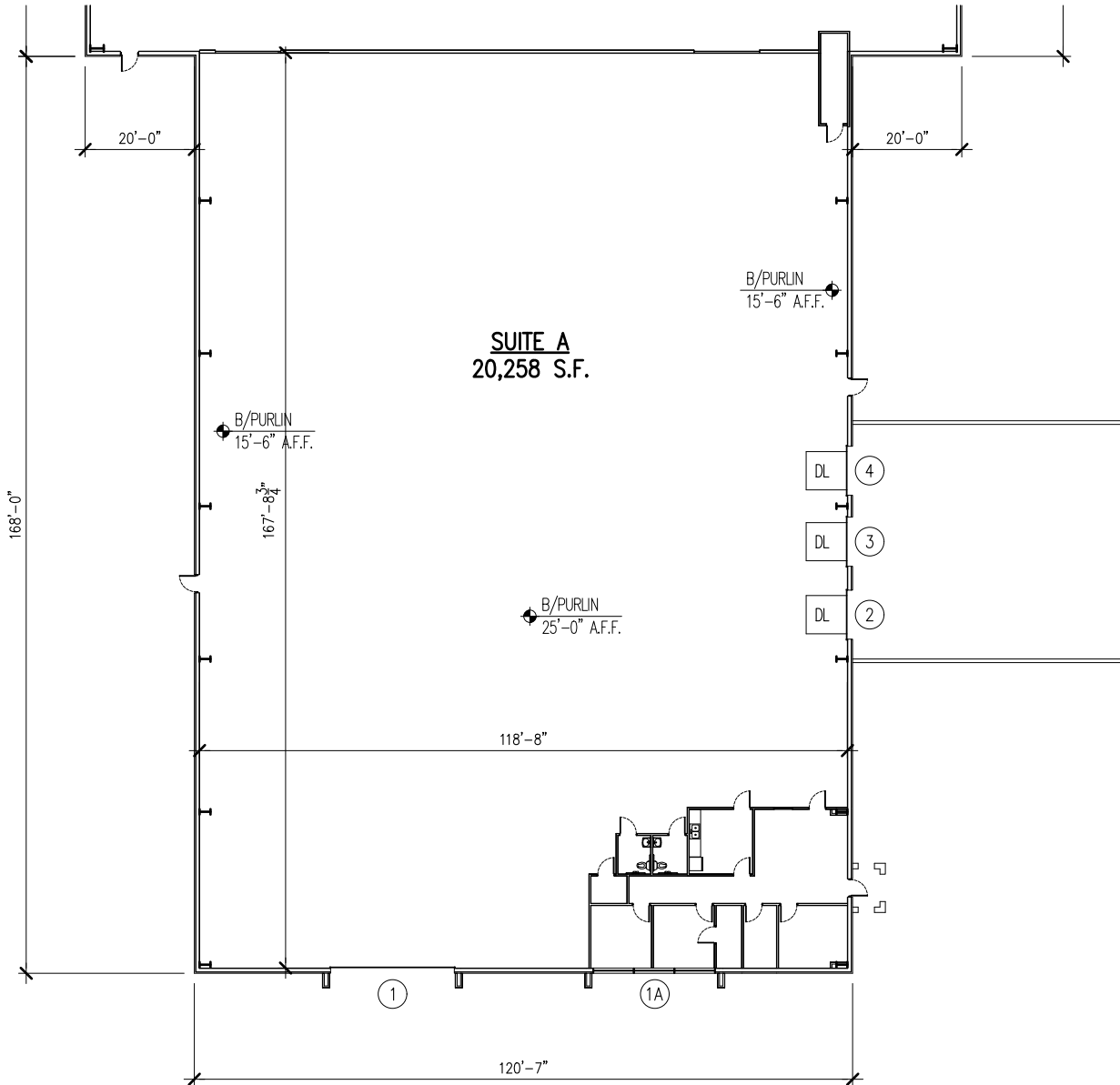


## DOOR SCHEDULE

- ① 22'8x14' O.H. DOOR, ELECTRIC, DRIVE THRU
- ①A 22'8x14' OPENING INFILLED W/ STOREFRONT WINDOWS
- ② 9'x10' O.H. DOOR, DOCK, MANUAL, DOCK LEVELER (DL)
- ③ 9'x10' O.H. DOOR, DOCK, MANUAL, DOCK LEVELER (DL)
- ④ 9'x10' O.H. DOOR, DOCK, MANUAL, DOCK LEVELER (DL)



4703 ALLMOND AVE.  
 SUITE A  
 SCALE: 1/32" = 1'-0"